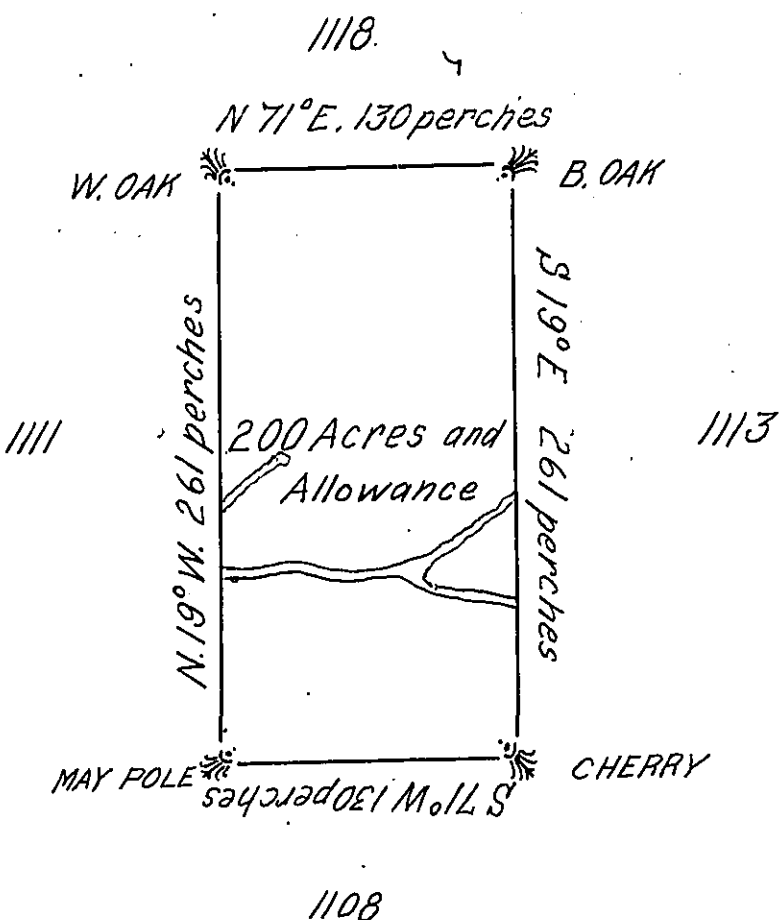


FORM NO. 1.
Lot, MCXII

Donation Land, in District N^o 6.



In pursuance of an Act of General Assembly of the State of Pennsylvania, passed the twenty fourth Day of February, 1785 intitled, 'An Act for directing the mode of distributing the Donation Lands promised to the Troops by this Commonwealth, and by order of the Surveyor General, with the approbation of the Honourable the Executive Council I have surveyed on the fifth Day of November, 1785, the above described Tract of two hundred Acres of Land, and Allowance of Six per Cent for Roads &c. N^o 1112 situate in District N^o 6, on the West Side of the Allegheny River, in the County of Westmoreland.

John Lukens, Esq.
Surveyor General

Ja. Chrystie Deputy
Surveyor

IN TESTIMONY that the above is a copy of the original remaining on file in the Department of Internal Affairs of Pennsylvania, made conformably to an Act of Assembly approved the 16th day of February 1833, I have hereunto set my hand and caused the Seal of said Department to be affixed at Harrisburg, this twenty-third day of April 1907

Isaac R. Brown
Secretary of Internal Affairs.